

Scuba Diving

Volcano Island Divers is the first ever dive operation on Tanna Island and has opened up the world class snorkelling reefs to the world, offering 'unspoilt, untouched & unbelievable aquatic experiences'.

Dive with our resident PADI MSDT Instructor or PADI Divemasters. Tanks & Weights supplied. Full hire gear is available. Contact our friendly staff for more information.

Volcano Island Divers recommends all persons intending to undertake SCUBA diving have suitable DAN or other Dive insurance coverage.

Discover Scuba Diving

This activity gives an opportunity for Novices to experience SCUBA diving in the safety of our swimming pool with our resident PADI MSDT instructor or Dive Masters. You will get to experience what it feels like to breath underwater, learn some basic diving skills & theory to help you enjoy the experience. There is an option of an additional Open Water dive, in the ocean in front of the resort, once the Discover Scuba Diving session has been completed. (Subject to weather & tidal conditions). If you intend to pursue further training & obtain your Open Water Diver certification in the future, this activity can be credited towards your full course.

Learn to Dive on Tanna

Volcano Island Divers offers PADI Scuba diving courses from Beginner to Master Scuba Diver, Junior Open Water, Open Water, Advanced Open Water and specialties. [Contact us](#) for more information

Volcano Island Divers at White Grass Ocean Resort & Spa - Phone: (+678) 30010 email: diving@whitegrasstanna.com



Site Information



Shore or Boat Dives

| | Max Depth | Level |
|-----------------|-------------|-----------------------|
| House Reef** | 18 metres | Beginner |
| Turtle Reef** | 20 metres | Beginner/Intermediate |
| Blue Hole One** | 9-15 metres | Intermediate |
| Blue Hole Two** | 6-20 metres | Intermediate |
| Circus Reef** | 14 metres | Beginner |
| Micks Folly** | 15 metres | Experienced |

Boat Dives

| | Max Depth | Level |
|----------------------|-----------|-----------------------|
| Kosabas Reef** | 18 metres | Intermediate |
| Blue Cave Aquarium** | 18 metres | Beginner/Intermediate |
| Kamitua Reef** | 30 metres | Experienced |
| MV Jean Percy Wreck | 14 metres | Intermediate |

**) Marine Park Fees apply



House Reef

Shore/Boat Dive



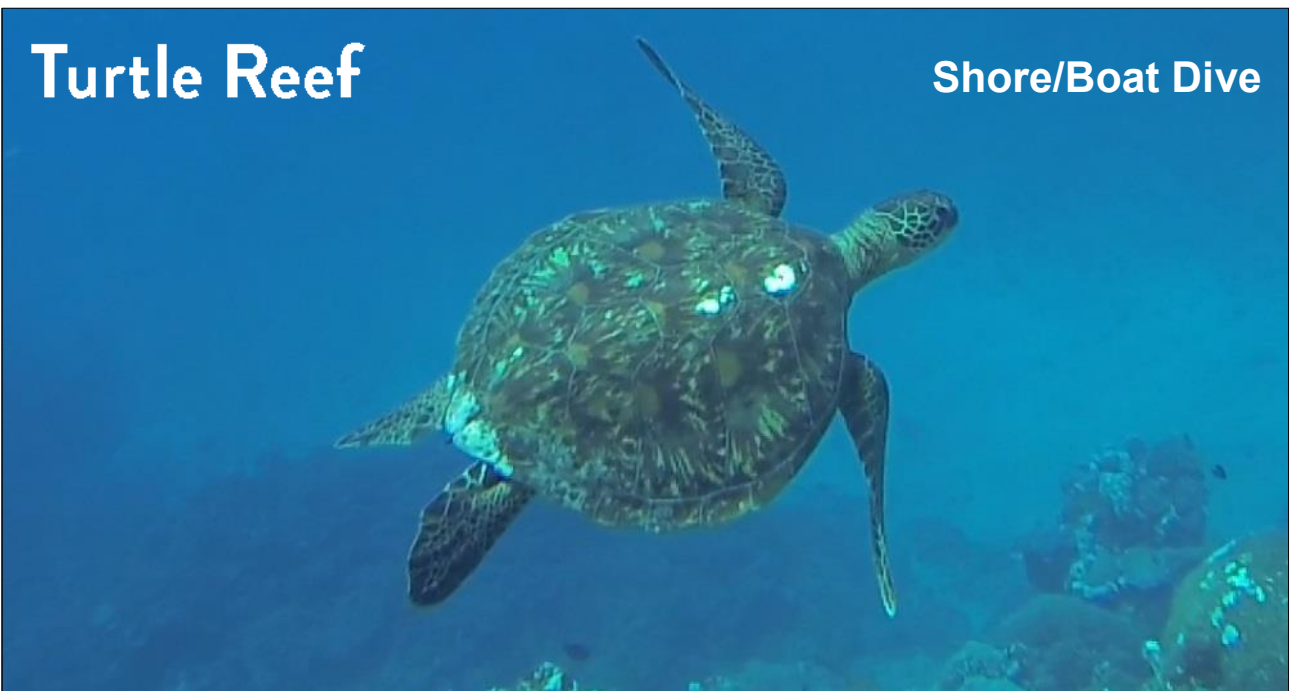
Accessible from White Grass Ocean Resort & Spa's purpose built jetty. See amazing coral formations, dugongs, turtles, moray eels, reef sharks and blue spotted rays. Maybe a pod of dolphins will swim past, or listen for the whale songs between July and September. Interesting topography, with swim throughs, tunnels and grottos to explore.

Level: Beginner

Max depth 20m

Turtle Reef

Shore/Boat Dive



Accessible from the jetty by a short surface swim, or via boat. Three large coral bommies come to within a few metres of the surface here. Swim with round head Green Turtles. See amazing coral formations, dugongs, moray eels, reef sharks and blue spotted rays. Maybe a pod of dolphins will swim past, or listen for the whale songs between July and September.

Level: Beginner/Intermediate

Max depth 20m

Blue Hole One

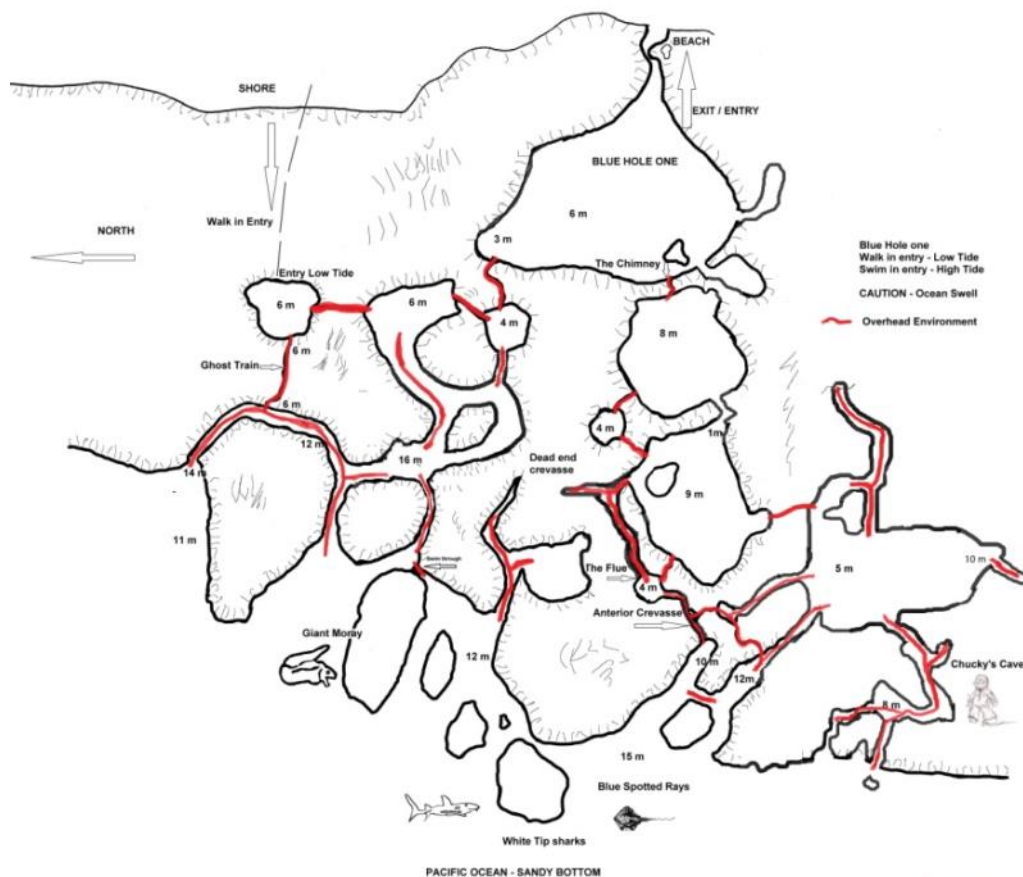
Shore/Boat Dive



Accessible from Blue Hole One beach, or a short boat ride. Here four large reef openings spread over a large area, interconnected with tunnels and swim throughs. Access to the outer reef is gained via several choices of caves & swim throughs. Your sense of adventure & skill level will determine the best route to take. See amazing coral formations and fish life. Maybe dugongs, turtles, moray eels, reef sharks and blue spotted rays. Maybe a pod of dolphins will swim past, or listen for the whale songs between July and September.

Level: Intermediate/Cavern Dive

Max depth inside the hole 9m. Outer reef 15m



Blue Hole Two

Shore/Boat Dive

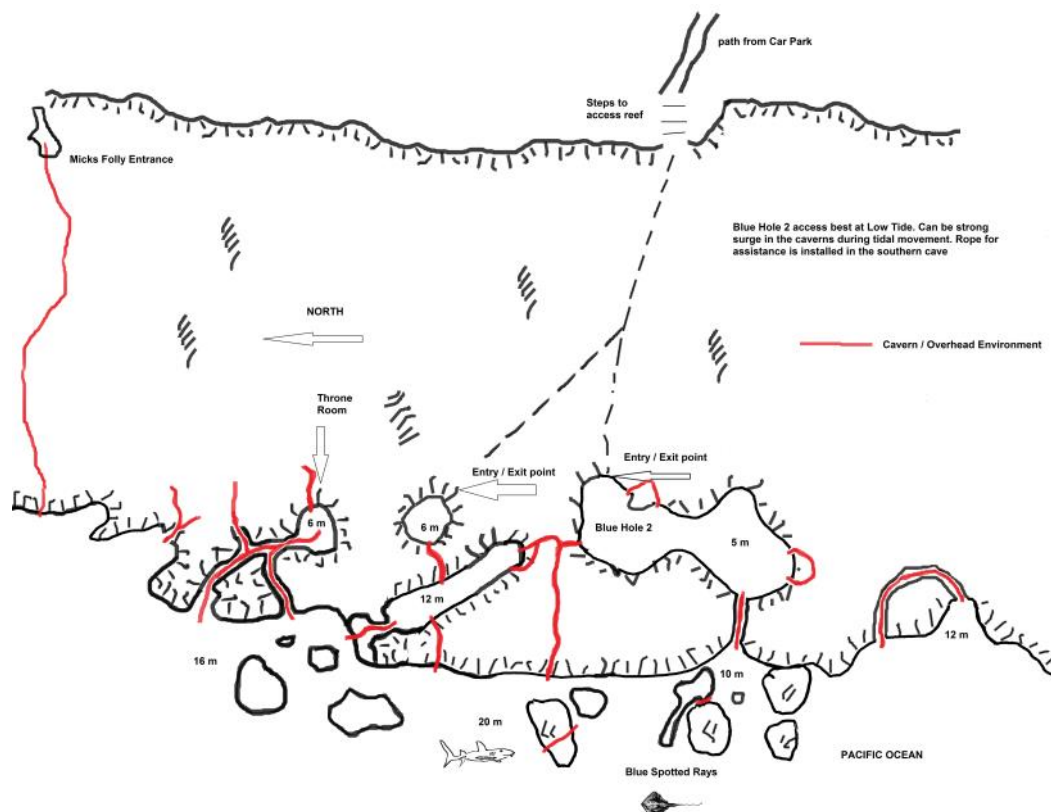


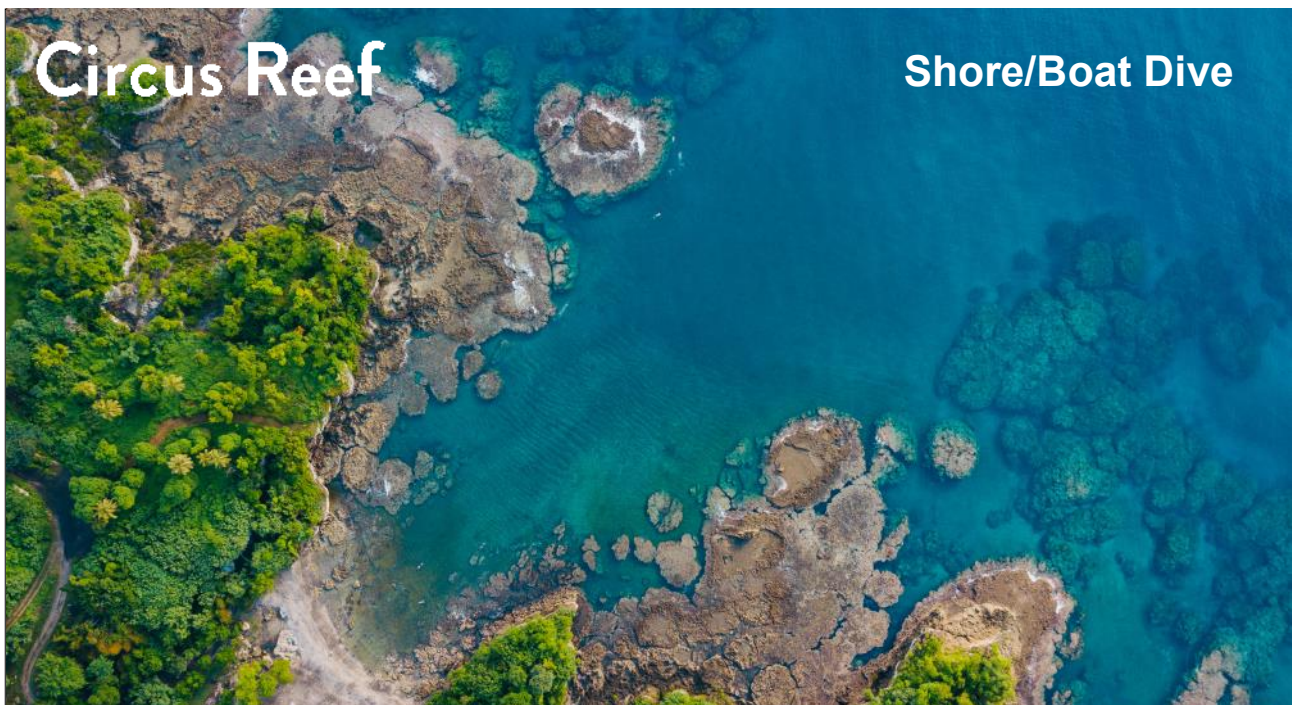
Accessible from Blue Hole Two car park or a short boat ride. Here a large opening in the reef system interconnects with tunnels and swim throughs to the outer reef. Your sense of adventure & skill level will determine the best route to take. Once outside on the reef, you will see amazing coral formations and fish life. Maybe dugongs, turtles, moray eels, reef sharks, blue spotted rays. There are majestic caverns, grottos and caves to explore.

Level: Intermediate

Max depth inside the hole 6m. Outer reef 20m.

Low tide access only from shore





Circus Reef

Shore/Boat Dive

Accessible via a 10 minute boat ride from White Grass Ocean Resort & Spa, or a short surface swim from Little Black beach. This site is a catacomb of bommies, swim throughs and old growth coral. A large clown fish colony makes this reef their home amongst the anemones. Christmas tree coral & many other species abound, along with the usual array of colorful marine life. Giant Manta Rays have been seen here. Also a great snorkeling site, it can be combined with our Blue Cave snorkeling tour.

Level: Beginner

Max depth 14m



Mick's Folly

Shore Dive

Accessible via a 10 minute boat ride from White Grass Ocean Resort & Spa, or a short reef walk from Blue Hole 2. This sites entry is a small opening in the reef, which leads through a cavern system to exit into the open water at 15 metres. This cavern is covered in old growth coral and critters that are stunned by the light from the divers torch, so unused to encountering light are they. Watch your exhaust bubbles dislodge dust from the roof of the cave as you make your descent to the cavern exit, out into Blue Water and make your way south along the reef to exit via the Blue Hole 2 cave system to shore, or join the boat on the outer reef.

Level: Experienced

Max depth: 15m

Kosabas Reef

Boat Dive



Accessible via a short boat ride from resort. Here large bommies reach to within a few metres of the surface. Once on the reef, you will see amazing coral formations and fish life. Giant clams are visible in places. You may come across dugongs, turtles, moray eels, reef sharks and blue spotted rays. This dive is usually done as a double morning dive combined with Blue Cave Aquarium or Kamitua Reef.

Level: Intermediate

Max depth 18m

Blue Cave Aquarium

Boat Dive



Accessible via a short boat ride from White Grass Ocean Resort & Spa. Here you can enter the famous Blue Cave on SCUBA, surface & take in the incredible colours of the bluest of blue water, with sunlight beaming through a natural 'window' in the ceiling of the cave. Exit the cave at 5 m & make your way West, descending through catacombs of coral formations, surrounded by a myriad of aquarium fish species.

You may come across dugongs, turtles, moray eels, reef sharks, blue spotted rays and giant trevally. This dive is usually done as a double morning dive combined with Kosabas Reef or Kamitua Reef.

Level: Beginners/Intermediate

Max depth: 18m

Kamitua Reef

Boat Dive



Accessible via a 20 minute boat ride from White Grass Ocean Resort & Spa. With 50 metre visibility, this **Ta-boo Fish** site boasts Sheer wall drop offs and prolific Pelagic Fish and marine life, from giant Yellowfin Tuna, Barracuda and Grey Reef Sharks, to Fan corals, Moray eels and Nudibranchs. Advanced Diving skills are recommended due to strong currents. This dive is usually done as a double morning dive with Blue Cave Aquarium or Kosabas Reef. Marine park entrance fees apply.

Level: Experienced

Max depth 30m

MV Jean Percy Wreck

Boat Dive



Accessible via a 40 minute boat ride from White Grass Ocean Resort & Spa, or a short surface swim from shore, weather permitting. This boat sunk in 14 metres after striking a reef during heavy seas in 2010. Only 20 m from shore, she lies due North/South & upright. This uncleaned, raw wreck still sports cargo in the holds and other equipment on board such as Generating plant, fish nets, tiled floors, electrical cables etc. Engine Room & other penetration is possible using appropriate Wreck Diving skills.

Level: Intermediate

Max depth: 14m



WORLD SMALLEST UNDERWATER SCOOTER

FOR SNORKEL TOURS, FREE DIVING AND
SCUBA DIVING

WHITESHARK MIX
HIRE AVAILABLE HERE

5,000vt

(approx 60 minutes battery life)

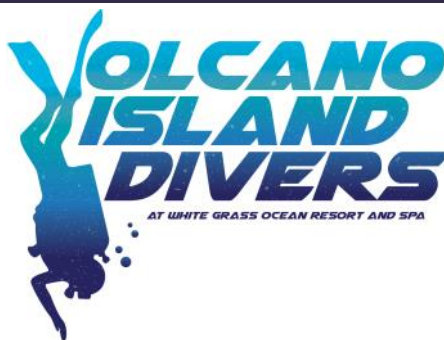
Security deposit required

Safety briefing necessary

**ENQUIRE AT
RECEPTION
OR DIVE SHOP**



SCUBA Diving Prices



Valid: 1 April 2019 to 31 March 2020

All prices in Vatu.

| Dive | SHORE Dive | | BOAT Dive | |
|---|---------------|---------------|---------------|---------------|
| | Own gear | Full Gear | Own Gear | Full gear |
| Single Dive | 5,500 | 7,700 | 9,300 | 11,500 |
| Double Dive* | 10,400 | 14,800 | 17,600 | 21,500 |
| 4 tank package* | 18,800 | 23,800 | 30,800 | 37,500 |
| 6 tank package* | 28,600 | 364,00 | 42,500 | 49,500 |
| 8 tank Package* | 35,900 | 44,700 | 45,800 | 58,500 |
| 10 tank Package* | 42,500 | 51,300 | 53,700 | 64,000 |
| Package rates are Per Person. Dive guide services included. | | | | |

| Stay Dive Packages | SHORE Dive | | BOAT Dive | |
|--|---------------|---------------|---------------|---------------|
| | Own gear | Full Gear | Own Gear | Full gear |
| Stay Dive 3 Night / 4 Tank* | 55,300 | 61,900 | 68,600 | 75,200 |
| Stay Dive 4 night / 6 Tank* | 71,800 | 78,400 | 88,300 | 94,900 |
| Package rates are Per Person. Dive guide services included. Stay / Dive packages are Twin Share & are subject to availability. Excludes airfares, food, drinks, tours. Single traveler room surcharge applies. Taylor made Stay/Dive Packages available on request. | | | | |



NOTES:

Own gear:

includes Tanks & Weights

Full gear hire:

includes BCD, Regs c/w Computer, Fins, Mask, Tank, Weights, Gloves, Exposure protection (optional)

Certain sites carry a Marine Park Daily fee of 1,500vt

Please enquire: diving@whitegrasstanna.com